

ATC Surveillance Minimum
Altitude Chart - ICAO

TRANSITION ALTITUDE
10000 FT

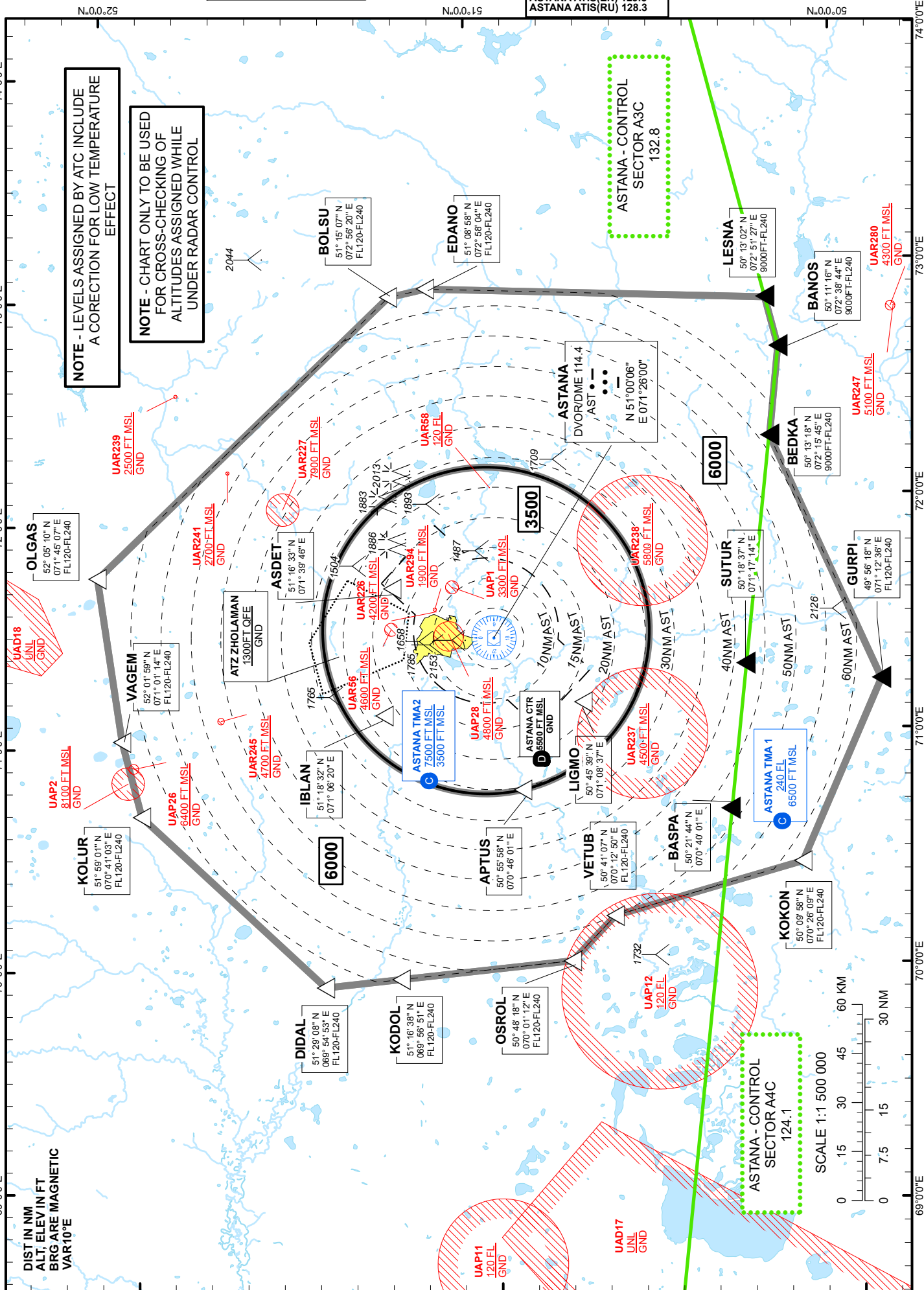
AERODROME ELEV
1166 FT

ASTANA TOWER 135.5
ASTANA APPROACH 124.6
ASTANA RADAR 120.7
ASTANA GROUND 119.6
ASTANA ATIS(EN) 129.5
ASTANA ATIS(RU) 128.3

ASTANA
NURSULTAN NAZARBAYEV
INTERNATIONAL AIRPORT

CHANGE: Tower FREQ.

DIST IN NM
ALT. ELEV IN FT
BRG ARE MAGNETIC
VAR 10°E



THIS PAGE INTENTIONALLY LEFT BLANK